

## GAW Newsletter — December 2011

### Inside This Issue

<i>President's Message</i>	1
<i>Reminders, Items of Interest</i>	2
<i>Tips &amp; Hints</i>	3
<i>Demonstrations, Events</i>	3
<i>November Instant Gallery</i>	3
<i>Video Tape Library</i>	6
<i>Woodturning Instructors</i>	6
<i>Woodturning Schools</i>	6
<i>Contact Information</i>	7
<i>Woodturning Links</i>	8

### President's Message

There is no demonstration this month because it is our holiday party. It will start at the normal meeting time of 6:30 at Highland Woodworking. The club will provide pizza, beer, wine and soft drinks. We ask that those attend bring a dessert. If you can't bring a dessert, please come anyway. There will be plenty for everyone. It is a family affair, so you are encouraged to bring your spouse, partner, children etc.

We will be exchanging gifts again this year. If you wish to participate, bring a small gift (preferably a turned item) in a brown bag. If you bring a guest and they wish to participate, please bring another bagged item for them. You will receive a ticket for each item you bring and when the exchange takes place, we will determine the order that people select their gift by calling ticket numbers.

Please remember to park on the street and not in the Highland parking lot.

Demonstrators will get free admission as well as a small honorarium to help cover the cost of travel, parking etc. It is OK for our members to share a shift, but they will also share the honorarium.

Since it is a juried show, we can't sell our work while we're demonstrating. We can have examples of our work, but it must be obvious that they are not for sale. We can however, sell ourselves, including the club and its benefits as well as whatever services we as individuals might provide.

In addition to our turning demonstration, there will also be fiber, clay, metal and glass artists demonstrating. The purpose is to help organizations like ours increase public awareness of their artist learning opportunities in the local area as well as to increase attendance.

We will be asking for volunteers and setting up a schedule in the near future.

This is my last president's message and it doesn't seem like two years since I wrote my first one. Two years seemed like a long time looking forward at that point, but now it seems like only yesterday. I have enjoyed the job and plan to stay heavily involved in club activities.

I would like to thank each member of the club for their help and participation in our meetings and other activities during the past two years. Special thanks go to the members of the board and those that worked on the

#### Points of Interest

- *Sinker Cypress Available*—p.2
- *Moulthrop Exhibition*—p. 2
- *Nov. Instant Gallery Photos*—p.3—5
- *Woodturning Links*—p. 9

We have been offered the opportunity to demonstrate at the American Craft Counsel show at the Cobb Galleria March 9-11, 2012. They will provide a booth, a table and power. We will supply the lathe and demonstrators. They have the time split into seven shifts of about three hours each. The show hours are Friday, March 9th, 10:00 am to 9:00 pm, Saturday, March 10th, 10:00 am to 6:00 pm and Sunday, March 11th, 10:00 am to 5:00 pm. There will be three shifts on Friday and two on Saturday and Sunday.

## President's Message Cont.

symposium, programs, scholarships, newsletter and nominating committees as well as those that hosted out of town demonstrators, ran cameras, ran sound systems, set up chairs for the meetings, made sure there was a lathe ready for our demonstrators and helped set up/take down the symposium. That's a long list, and I am sure that I have missed someone.

If I did, it was not intentional and thank you too.

You all have made my job easy. Thank you!

See you at the party on the 15th!

Steve Pritchard

## Reminders, Items of Interest

### Sinker Cypress Wood Available

I recently became acquainted with Alec Blalock who started a business to recover cypress (and heart pine) logs from the bottom of rivers around the Low Country of SC. He is actively looking for craftsman interested in this unique wood. I got a couple of log sections to turn to let him know how it worked out.



I have rough turned a few pieces and finished one bowl. I found it to be soft and easy to turn. The sapwood is a little punky, but holds together. This is beautiful wood, having picked up color from the minerals in the water and mud for over 100 years. The grain on these virgin trees is



extremely tight. My 13" diameter log was over 200 years old before it was felled and sank to the bottom.

Alec has plenty of Cypress available in various sizes. If you would like to turn some very interesting, unique wood, give him a call



or send him an email.  
Doug McCulloch.

[alec@virginheartsinkercypress.com](mailto:alec@virginheartsinkercypress.com)  
803-428-3884

### MOULTHROP: A Southern Legacy

Three Generations of Woodturning  
September 24 – December 18 in Galleries 1-3

If you have not already seen the Moulthrop exhibit at the Marietta / Cobb Museum of Art, you are almost out of time. Last day is this coming Sunday. Several people have said it is quite good and well worth the visit.

left to right: Ed Moulthrop, Figured Tulipwood Ellipsoid; Matt Moulthrop, Red Bud Chalice; Philip Moulthrop, Bundled Mosaic Globe, mixed woods. Photo by Bard Wisley



Marietta / Cobb Museum of Art  
30 Atlanta St SE  
Marietta, GA 30060  
Tuesday through Friday: 11:00 a.m. - 5:00 p.m.  
Saturday: 11:00 a.m. - 4:00 p.m.  
Sunday: 1:00 p.m. - 4:00 p.m.

### Newsletter input request

We are always soliciting members input (articles, news items, tips, suggestions, links to relevant web sites, or any other content that you have to share) to make this newsletter better serve GAW members. Send ideas / content to:

[editor@gawoodturner.org](mailto:editor@gawoodturner.org)

## Tips & Hints

### Web Site with Lots of Good Turning Info.

Darrell Feltmate from Nova Scotia has accumulated quite a collection of hints, tips, tool ideas, accessories, projects, etc. Check it out.

<http://aroundthewoods.com/index.shtml>

### Tips & Hints Requested

If you have a tip that will make turning easier, more fun, safer, or make our pieces turn out better why not share it. Just send it to me—the newsletter editor at [editor@gawoodturner.org](mailto:editor@gawoodturner.org)

## Demonstrations, Events

### Upcoming GAW Demonstrators:

All meetings are the 3rd Thursday of each month at 6:30 pm. See Contact page for location information.

- December 15th 2011—GAW Christmas Party!!
- January 19th 2012—Alan Leland
- February 16th 2012—
- March 15th 2012—
- April 19th 2012—
- May 17th 2012—
- June 21st 2012—

## Instant Gallery Photos, November Meeting

### November Instant Gallery

The quality of work our club members produce is always high, and consistently improving. Last month was no exception. Browse the pieces below and you will agree. If you have a question about any of the pieces, contact the owner at the next meeting.

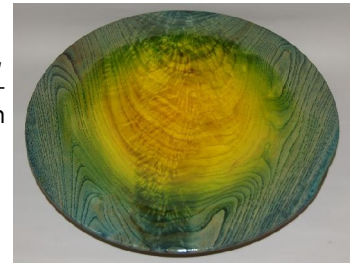


George Daughtry — 4 Walnut vessels, one with an NRA coin in the lid.



Chestnut crotch platter, dyed in sunburst style—  
Doug McCulloch

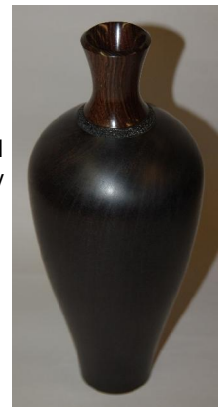
Segmented Red Grandis and black veneer vase, going to the World of Coke museum—John Rudert.



Tall Walnut and Mexican Rosewood vessel—Jim Hardy



Osage Orange vessel finished with Polyurethane and Beall Buffing system—Steve Pritchard



*Instant Gallery Photos, November Meeting—Cont.*



Large American Elm vessel with oil finish—Wes Jones

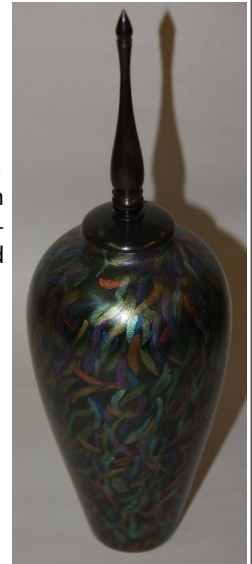


Dragon Bowl. Painted Maple, burned and colored pencil—Jim Hutchinson

Cherry ornament with Inlaid reindeer—Butch Davis



Pear vessel with Ebony finial, painted black and overlaid with colored brush stroke design – Steve Pritchard



Urchin Ornament with Cherry finials—Butch Davis



Large Black Walnut Platter with pyrography. Finished with Tung Oil—Turk Aliston

Pink Alabaster lidded box—Jack Morse



Pear vessel with burned design – Steve Pritchard



Ginkgo lidded box with carved and dyed Ginkgo leaf on lid—Jack Morse



Large pink and white urchin ornament on base. Small gold ornament (below) - Mark Sillay

Tall Cherry vessel—Jack Morse



*Instant Gallery Photos, November Meeting—Cont.*



Large purple urchin mushroom and green urchin ornament with base and finial (below)—Mark Sillay



Partial natural edge Big Leaf Maple burl vessel, dyed. Steve Pritchard



Large Red Oak platter with handles—John Michael



Beautiful hand painted ornaments. Real eggs. Close up of Winter scene (on right) - Peggy Schmid

*Mark Sillay—Demonstrating the Tenonless Ornament*

Mark gave a very interesting demo on how to make urchin ornaments and items without having to put tenons on the ends of the finials. He sands the holes and turns the finial ends at a 45° angle and uses a toothpick to glue the two finials together.



Making a fine finial for an ornament and turning the body. Edges at 45°.



Large natural edge Sassafras bowl—Wes Jones



Natural edge Laurel Oak bowl. Looks worm eaten, but this may have been caused some other way—John Michael

Mark noted that a coat of Krylon Acrylic spray is needed to strengthen the typical sea urchin shell. Material sources:

- "Instrument Grade" Gabon Ebony pegs - 'Gurian Instruments', Seattle. Ebony Dowels, 1".
- Sea Urchin and other shells. 'Deltona Sea Shells' .
- Gold Plated Screw Eyes, 4 x 8 mm. Check 'Etsy' and search for "Gold Plated Screw Eyes, 4 x 8 mm". Look for 'Islandgals' & 'Youneedisourbeads'.

Check out Mark's web site—  
[www.marksillay.com/Mark\\_Sillay/HOME.html](http://www.marksillay.com/Mark_Sillay/HOME.html)

## DVD/Video Tape Library

The Georgia Association of Woodturners (GAW) has instructional videos available for rental before each GAW meeting. A full list of the videos is shown on our website. Only members may rent tapes and DVDs. Rentals are \$2.00 per month. Rentals are lim-

*Take advantage of this valuable and money saving resource.*

ited to 2 tapes or DVDs per month, and the items must be returned the following month. Late fees of \$2.00 per month will be assessed for each item not returned on time. New titles are being added every month!

## Woodturning Schools

The following schools in the Southeast offer classes in woodturning, as well as other arts and crafts. Check out their websites to see the scheduled course offerings.

John C. Campbell Folk School [www.folkschool.org](http://www.folkschool.org)

Arrowmont School of Arts & Crafts [www.arrowmont.org](http://www.arrowmont.org)

Highland Woodworking [www.highlandwoodworking.com](http://www.highlandwoodworking.com)

Appalachian Center for Crafts [www.tntech.edu/craftcenter](http://www.tntech.edu/craftcenter)

Woodcraft [www.woodcraft.com](http://www.woodcraft.com)

## Woodturning Instructors

The following GAW club members give private woodturning instruction in their own shops. Contact them for more information.

Frank Bowers  
[fcbowrs@aol.com](mailto:fcbowrs@aol.com)  
404-292-1107

Phil Colson  
[pcolson@mindspring.com](mailto:pcolson@mindspring.com)  
404 518-4925  
404 292-1107

Nick Cook  
[nickcook@earthlink.net](mailto:nickcook@earthlink.net)  
[www.nickcookwoodturner.com](http://www.nickcookwoodturner.com)  
770 421-1212

Michael Gibson  
[www.michaelgibsonwoodturner.com](http://www.michaelgibsonwoodturner.com)  
404 803-1438

*Take your skills to the next level. Have more fun.*

Wes Jones  
[wwjones@comcast.net](mailto:wwjones@comcast.net)  
770 972-6803

Jack Morse  
[johnmorse@bellsouth.net](mailto:johnmorse@bellsouth.net)  
770 316-7941

Peggy Schmid  
[schmidgodfrey@bellsouth.net](mailto:schmidgodfrey@bellsouth.net)  
678 947-4562

Mark Sillay  
[barmark@comcast.net](mailto:barmark@comcast.net)  
404 556-1736

[www.gawoodturner.org](http://www.gawoodturner.org)

Highland Woodworking  
1045 North Highland Avenue NE  
Atlanta, Georgia 30306  
Phone: (404) 872-4466  
E-mail:



*The Georgia Association of Woodturners (GAW) is a chapter of the American Association of Woodturners (AAW), dedicated to providing education, information and organization to those interested in woodturning.*

*The GAW services those in the metro-Atlanta area. We meet on the third Thursday of each month at 6:30 P.M. at Highland Woodworking ([www.highlandwoodworking.com](http://www.highlandwoodworking.com)) in Virginia Highlands. Meetings are open to all. Enter through the loading dock at the rear of the building and go up-stairs. Highland Woodworking closes at 6:00 P.M. on Thursdays, so come early and shop.*

Name, Position	Phone	Email address
Steve Pritchard, President	770-947-3457	<a href="mailto:president@gawoodturner.org">president@gawoodturner.org</a>
Frank Bowers, Vice President	404-292-1107	<a href="mailto:vp@gawoodturner.org">vp@gawoodturner.org</a>
Denis Delehanty, Treasurer	404-550-2659	<a href="mailto:treasurer@gawoodturner.org">treasurer@gawoodturner.org</a>
Jane Bridges, Secretary	770-491-1618	<a href="mailto:secretary@gawoodturner.org">secretary@gawoodturner.org</a>
Jim Hardy, Member at Large	770-992-4195	<a href="mailto:board1@gawoodturner.org">board1@gawoodturner.org</a>
Phil Hargrove, Member at Large	478-862-5327	<a href="mailto:board2@gawoodturner.org">board2@gawoodturner.org</a>
Danny McCravy, Past President	770-949-6372	<a href="mailto:board3@gawoodturner.org">board3@gawoodturner.org</a>
Harvey Meyer, Symposium Chair	770-671-1080	<a href="mailto:symposium@gawoodturner.org">symposium@gawoodturner.org</a>
Ron Britton, Program Chairman	770-253-0882	<a href="mailto:program_committee@gawoodturner.org">program_committee@gawoodturner.org</a>
Harvey Meyer, Publicity Chairman	770-671-1080	<a href="mailto:publicity@gawoodturner.org">publicity@gawoodturner.org</a>
Harry Saunders, Scholarship Chairman	404-352-2946	<a href="mailto:scholarships@gawoodturner.org">scholarships@gawoodturner.org</a>
Steve Sandler, Librarian	770 908-2676	<a href="mailto:sandersm@comcast.net">sandersm@comcast.net</a>
Doug McCulloch, Newsletter Editor	770-499-1805	<a href="mailto:editor@gawoodturner.org">editor@gawoodturner.org</a>
Nick Cook, Advisor	770-421-1212	<a href="mailto:advisor@gawoodturner.org">advisor@gawoodturner.org</a>
Steve Pritchard, Webmaster	770-947-3457	<a href="mailto:webmaster@gawoodturner.org">webmaster@gawoodturner.org</a>

## Woodturning Links

### Craft Supply

[www.woodturnerscatalog.com](http://www.woodturnerscatalog.com)

800-551-8876

Woodturning Supplies

### Highland Woodworking

[www.highlandhardware.com](http://www.highlandhardware.com)

800-241-6748

Woodworking tools, supplies

### Atlanta Wood Products

[www.hardwoodweb.com](http://www.hardwoodweb.com)

800-964-7804

Specialty Hardwoods

### Packard

[www.packardwoodworks.com](http://www.packardwoodworks.com)

800-683-8876

Woodturning Supplies

### The Cutting Edge

[www.cuttingedgetools.com](http://www.cuttingedgetools.com)

800-790-7980

Turning and carving tools, supplies

### Woodcraft

[www.woodcraft.com](http://www.woodcraft.com)

800-225-1153

Woodworking and Hardware

### American Association of Woodturners

[www.woodturner.org](http://www.woodturner.org)

Woodturning Association

### Penn State

[www.pennstateind.com](http://www.pennstateind.com)

800-377-7297

Woodturning tools, supplies

### Rockler

[www.rockler.com](http://www.rockler.com)

800-279-4441

Woodworking and Hardware

### Klingspor

[www.woodworkingshop.com](http://www.woodworkingshop.com)

800-228-0000

Abrasives and woodturning supplies

### Hut Products

[www.hutproducts.com](http://www.hutproducts.com)

800-547-5461

Woodturning tools, supplies

### Wood magazine Forum

[www.woodmagazine.com](http://www.woodmagazine.com)

Q & A on Woodturning

## Closing

This newsletter is published monthly by the Georgia Association of Woodturners, (GAW). All opinions expressed by contributors do not necessarily reflect those of the Editor, Officers, or the GAW.

Woodturning Schools and Instructors listed in this Newsletter are not recommended or endorsed by the GAW, but are made available to the GAW members and others as a convenience only.

Your GAW questions, comments and suggestions are always welcome. You may contact any officer through the contact information in this newsletter, or our website's contact webpage:

[www.gawoodturner.org/contact.shtml](http://www.gawoodturner.org/contact.shtml)