

## GAW Newsletter — December 2013

### Inside This Issue

<i>President's Message</i>	1
<i>Reminders, Items of Interest</i>	3
<i>Demonstrations, Events</i>	3
<i>November Instant Gallery</i>	4
<i>Video Tape Library</i>	6
<i>Woodturning Instructors</i>	6
<i>Woodturning Schools</i>	6
<i>Contact Information</i>	7
<i>Woodturning Links</i>	8

#### Points of Interest

- *GAW Christmas Party—p. 1*
- *GAW Dues are due—p. 3*
- *Schools and Education—p. 7*
- *Woodturning Links—p. 9*

### President's Message

Dear GAW Members,  
As winter winds swirl snow flurries into white out conditions and drifts in other parts of the country, we have escaped much of the rough winter weather so far. Hopefully, we will continue to enjoy the holiday season with relatively mild Atlanta weather. I want to thank all of our club members who have helped me and our club on all of our endeavors over the last two years. Our Scholarship Fund and our Operating Fund are in great shape for 2014. Since March 22, 2012 we have been registered in the State of Georgia as a Domestic Non-Profit Corporation (Georgia Association of Woodturners, Inc.) and we are awaiting our final approval letter from the Internal Revenue Service on our 501(c)3 Non-Profit application. With this approval, our club will be able to expand and get further support from vendors, corporations and individuals in the form of donations, grants, equipment, property, etc., that are tax deductible to them. Please give any input you have to your Board of Directors that might help us become a better woodturning club.

#### CHRISTMAS PARTY & ELECTION OF NEW CLUB OFFICERS

Our Christmas Party will be held on Thursday night, December 19, 2013, at 6:30 pm in our regular meeting place at the Georgia Tech Digital Fabrication Lab located at 676 Marietta Street Atlanta, GA. There is plenty of parking across the street at Randall Brothers Millworks. Bring a handmade gift in a brown bag if you

would like to exchange it for a different gift. For each gift you bring you will be given an exchange ticket for the drawing. Our club will provide the pizza, beer, wine, soft drinks and water. Please bring some holiday desserts for Santa.

#### MEMBER INFORMATION

Please e-mail me any changes you have had in your phone numbers, address, e-mail, etc. for our 2014 club membership directory. ( marksil-lay@me.com )

#### JANUARY DEMONSTRATOR AND HANDS ON WORKSHOP - CHRIS RAMSEY

Cowboy Hat Workshop - Tuesday January 14, 2014 at Chattahoochee Woodturners Gainesville, GA \$100 Call Al Pinnell 678-357-7676 for a slot. Three legged natural edge bowl workshop - Wednesday January 15, 2014 at Woodcraft in Alpharetta, GA \$100 (GAW members \$50) We will send out an electronic sign up shortly.

Chris Ramsey was born in 1962 in New York City, spent a few years in Utah and grew up in Northern California. It was in California where his desire for woodworking began to develop. He took woodshop in high school and made all of the typical projects that students make. Chris recalls, "There was a big lathe in the corner, covered up with a sheet, but we were not allowed to use it. We were told that it was a dangerous piece of equipment and the school's insurance policy would not permit

## Presidents Message—Cont.

students to use the lathe." Ramsey moved from California to Kentucky "to get out of the 'rat race'" and lived on a houseboat on Lake Cumberland. After a few very cold winters, "I discovered that there is not much R-value in a piece of plywood so I moved out of the houseboat and into my house."

With limited outdoor activity in the winter months, Chris felt he needed a hobby that would help pass the time until summer returned. In 1998 his identical twin brother, David, presented him with a birthday gift, a small "starter" lathe, which sparked his interest. He now had the tool that, for three years in high school, he was forbidden to touch, and he soon became absorbed with the turning process. "After I bought a Oneway I spent every free moment in the shop. I was addicted."



At that time, he owned a communications company (American Network Cable) which required that he spend many weekends and late nights away from his family. He would turn for hours at the lathe during the weekdays and found a great deal of enjoyment while turning.

He says, "In 2000 I made the decision that money was not everything and, with my gallery sales on a steady increase, made the jump from an unhappy owner of a company to a much happier full-time woodturner" a move he has never regretted.

Chris says of one aspect of turning, "Although I was most interested in turning wooden hats early in my career, it was not as fulfilling because you know exactly what the shape is going to be before you begin turning. The only real surprise is what the wood grain will offer. I came to particularly enjoy turning fresh cut or 'green' thin-wall natural edge pieces. To relax the mind and allow the creative process of exploring shapes, designs and new possibilities previously envisioned is extremely rewarding. There is a wonderful surprise every time."

Ramsey's work can be found in numerous galleries, craft shops, in permanent collections of museums

and private collections. He has exhibited in the United States, the Far East and Europe.

Ramsey is a popular and much-sought-after demonstrator and leads workshops for turning clubs and has been featured at various regional symposiums. He welcomes the opportunity to share his knowledge and skills with others. He is a member of the American Association of Woodturners, The Southern Highlands Craft Guild and the Kentucky Craft Marketing Program.

To view more of Chris Ramsey's work, please visit his website at <http://www.knot-head.com> he welcomes emails at [artist@knot-head.com](mailto:artist@knot-head.com).

### TENNESSEE ASSOCIATION OF WOODTURNERS SYMPOSIUM

The Tennessee Association of Woodturners (TAW) will be presenting their 26th Annual Symposium on Friday, January 31st and Saturday, February 1st, 2014. The Symposium will be held at the Franklin Marriott Cool Springs, 700 Cool Springs Boulevard in Franklin, TN. The 2014 Symposium features some of the worlds' leading woodturners including: Trent Bosch, Barbara Dill, Doug Fisher and Kurt Hertzog.

### SAFETY TIP

When going to pick up some FOUND WOOD take along some old 2x6 or 2x8 boards that can be used as a ramp to roll or slide the wood up into your vehicle. It just may help you from injuring your back in the excitement of the moment. If you do lift remember to bend down and lift with your legs.

When cutting wet wood on your band saw try to use blades that have every tooth set and wide kerfs to give the blade space in the wet sap filled sawdust. Blow out the rollers or guides frequently (especially the lower ones) so they don't pack up and bind the blade. If the inner side of your blade gets impacted with sap and residue it will make the bandsaw blade drift and bind. Clean it with mineral spirits WHEN NOT RUNNING.

Holiday Cheers!  
Mark Sillay, President  
404-556-1736

## *Demonstrations, Events, Reminders*

### *Upcoming GAW Demonstrators:*

All meetings are the 3rd Thursday of each month at 6:30 pm. See Contact page for location information.

- January 17th 2013—Joe Ruminiski
- February 21st 2013—Brian Sykes, Teapots, wall tiles, tools and finishes
- March 21st 2013—Mark Gardner
- April 18th 2013—Warren Carpenter
- May 16th 2013— Mike Peace—hand chasing threads
- June 20th 2013—Nick Agar
- July 18th 2013—Frank Bowers
- August 15th 2013—Harvey Meyer
- September 19th 2013—Stuart Mortimer—Demo Ideas being solicited now
- September 20th—22th 2013—Turning Southern Style XIX
- October 17th 2013—Dixie Biggs
- November 21st 2013—Skip Wilbur
- December 19th 2013—Christmas Party

### *GAW Christmas Party*

Don't forget about our annual Christmas party this Thursday, December 19th at the usual meeting place. Pizza will be provided. Bring a dessert to share, if you are so inclined.

### *Time to pay your GAW Dues (and AAW)*

If you didn't pay your 2014 GAW dues at the last meeting, you can pay Wes Jones at the Christmas party or send him a check at:

Wes Jones  
591 Battersea Drive  
Lawrenceville, GA 30044

Dues are still only \$25 (\$30 family). This is the best bargain in town. We have some great demonstrators coming this next year. Remember, if you let your dues lapse, you will have to wait 12 months before you can qualify for a woodturning scholarship. So, get your dues paid now.

### *2014 GAW Elections*

We will vote on new board members at this December meeting. The candidates are:

- President—Steve Pritchard
- Vice President—Doug McCulloch
- Treasurer—Harvey Meyer
- Secretary—Bob Black
- Member at Large—Open
- Newsletter—Bob Lough and George Daughtry

# November Instant Gallery

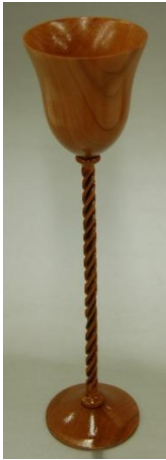
The instant gallery was back last month. As we have come to expect, our members brought many fine pieces. Take a look below. Contact the turner with questions.



"Basket Weave" Vessel, Bradford Pear with Ebony finial—Harvey Meyer



Different "basket weave" design in a Bradford Pear vase—Harvey Meyer



Twisted stem goblet, Stuart Mortimer style—Kevin Wood



12 twist spiral carved vessel with African Blackwood foot and finial—Kevin Wood



Walnut bowl with textured lip—George Daughtry



Small Peach wood vase with red dye and texturing on the outside—George Daughtry



Maple leaf carved vessel with Walnut inlay—Leigh Brookes



Big Leaf Maple disk with Big Leaf Maple leaf carved and dyed on the surface—Jack Morse

Cherry Bowl with interesting grain—Roger Sword



Set of 12 sample disks with various spirals, texture, colors—Mike Peace

## November Instant Gallery—Cont.



Pear and Osage Orange childrens toy (from Richard Raffan book) - Mike Peace

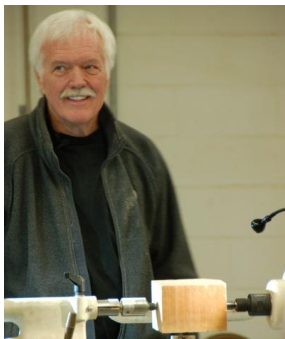
Sample carving disk, from Dixie Biggs class— Bob Black



Large Walnut bowl textured and painted on outside—Wes Jones

### Skip Wilbur Demo—Music Boxes

Skip is from the Mid-South Turners in Memphis. He demonstrated making a music box at the November meeting. Select pictures from the demo are below.



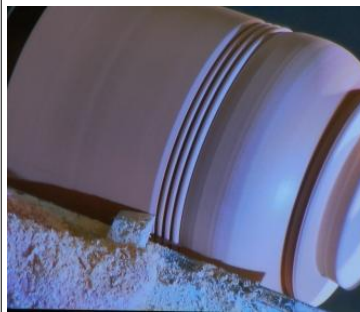
Skip explaining the process before starting work. He usually starts with a 4" x 4" x 5 1/2" L blank.

Working on the base and getting the lip for the top correct.



Using a round nose scraper to clean up the bottom of the inside of the base.

Shaping the top as it is jammed on to the base.



Shaping the top to blend in to the base and adding beads to hide the seam

Finishing off the top with it taped to the base (no tail stock possible for this



Some finished product, and a supplies list Skip uses.



- 18 Note Music Movements
- Klockit – clear plastic case \$5.99 extended key \$5.59
  - Amazon - \$29.95 plus \$7.49 (no case)
  - National Art Craft - \$6.50 Sankyo frosted big variety
  - The Music House – various prices (high end)
  - The Music Box Shop – UK
  - Woodworker's Supply - \$7.889 (frosted) big variety
  - Rockler - \$13.69 (no case)
  - Whittemore-Durgin - \$8.00+ (frosted) big selection
- Amazon - West System 655K G/Flex Epoxy Adhesive



## DVD/Video Tape Library

The Georgia Association of Woodturners (GAW) has instructional videos available for rental before each GAW meeting. A full list of the videos is shown on our website. Only members may rent tapes and DVDs. Rentals are \$2.00 per month. Rentals are lim-

*Take advantage of this valuable and money saving resource.*

ited to 2 tapes or DVDs per month, and the items must be returned the following month. Late fees of \$2.00 per month will be assessed for each item not returned on time. New titles are being added every month!

## Woodturning Schools

The following schools in the Southeast offer classes in woodturning, as well as other arts and crafts. Check out their websites to see the scheduled course offerings.

John C. Campbell Folk School [www.folkschool.org](http://www.folkschool.org)

Arrowmont School of Arts & Crafts [www.arrowmont.org](http://www.arrowmont.org)

Highland Woodworking [www.highlandwoodworking.com](http://www.highlandwoodworking.com)

Appalachian Center for Crafts [www.tntech.edu/craftcenter](http://www.tntech.edu/craftcenter)

Woodcraft of Atlanta [www.woodcraft.com](http://www.woodcraft.com)

## Woodturning Instructors

The following GAW club members give private woodturning instruction in their own shops. Contact them for more information.

Frank Bowers  
[fcbowrs@aol.com](mailto:fcbowrs@aol.com)  
404-292-1107

Phil Colson  
[pcolson@mindspring.com](mailto:pcolson@mindspring.com)  
404 518-4925  
404 292-1107

Nick Cook  
[nickcook@earthlink.net](mailto:nickcook@earthlink.net)  
[www.nickcookwoodturner.com](http://www.nickcookwoodturner.com)  
770 421-1212

Michael Gibson  
[www.michaelgibsonwoodturner.com](http://www.michaelgibsonwoodturner.com)  
404 803-1438

*Take your skills to the next level. Have more fun.*

Cynthia Gibson—Pyrography  
Authorized Razertip Dealer  
[www.michaelgibsonwoodturner.com](http://www.michaelgibsonwoodturner.com)  
404 803-1438

Wes Jones  
[wwjones@comcast.net](mailto:wwjones@comcast.net)  
770 972-6803

Jack Morse  
[johnmorse@bellsouth.net](mailto:johnmorse@bellsouth.net)  
770 316-7941

Peggy Schmid  
[schmidgodfrey@bellsouth.net](mailto:schmidgodfrey@bellsouth.net)  
678 947-4562

Mark Sillay  
[marksillay@me.com](mailto:marksillay@me.com)  
404 556-1736

[www.gawoodturner.org](http://www.gawoodturner.org)

Meeting Location:

GA Tech Digital Fabrication Lab  
676 Marietta Street Atlanta, GA.  
[www.dbl.gatech.edu/dfi/home](http://www.dbl.gatech.edu/dfi/home)



*The Georgia Association of Woodturners (GAW) is a chapter of the American Association of Woodturners (AAW), dedicated to providing education, information and organization to those interested in woodturning.*

*The GAW services those in the metro-Atlanta area. We meet on the third Thursday of each month at 6:30 P.M. at the Ga Tech Digital Fabrication Lab near I-75 and North Ave. Meetings are open to all. Parking is at the Lab, and across the street at Randal Brothers.*

Name, Position	Phone	Email address
Mark Sillay, President	404-556-1736	<a href="mailto:pres@gawoodturner.com">pres@gawoodturner.com</a>
Marty Wildes, Vice President	770-866-9172	<a href="mailto:vp@gawoodturner.org">vp@gawoodturner.org</a>
Wes Jones, Treasurer	770-972-6803	<a href="mailto:treasurer@gawoodturner.org">treasurer@gawoodturner.org</a>
Turk Aliston, Secretary	404-790-8983	<a href="mailto:secretary@gawoodturner.org">secretary@gawoodturner.org</a>
Bob Lough, Member at Large	404-377-3140	<a href="mailto:board1@gawoodturner.org">board1@gawoodturner.org</a>
Kevin Woods, Member at Large	770-633-9928	<a href="mailto:board2@gawoodturner.org">board2@gawoodturner.org</a>
Steve Pritchard, Past President	770-947-3457	<a href="mailto:board3@gawoodturner.org">board3@gawoodturner.org</a>
Jim Hardy, Symposium Chair	770-992-4195	<a href="mailto:symposium@gawoodturner.org">symposium@gawoodturner.org</a>
Mark Sillay, Program Chairman	404-556-1736	<a href="mailto:program_committee@gawoodturner.org">program_committee@gawoodturner.org</a>
Harvey Meyer, Publicity Chairman	770-671-1080	<a href="mailto:publicity@gawoodturner.org">publicity@gawoodturner.org</a>
Harry Saunders, Scholarship Chairman	404-352-2946	<a href="mailto:scholarships@gawoodturner.org">scholarships@gawoodturner.org</a>
Frank Bowers, Librarian	404-292-1107	<a href="mailto:sandlersm@comcast.net">sandlersm@comcast.net</a>
Doug McCulloch, Newsletter Editor	770-499-1805	<a href="mailto:editor@gawoodturner.org">editor@gawoodturner.org</a>
Nick Cook, Advisor	770-421-1212	<a href="mailto:advisor@gawoodturner.org">advisor@gawoodturner.org</a>
Steve Pritchard, Webmaster	770-947-3457	<a href="mailto:webmaster@gawoodturner.org">webmaster@gawoodturner.org</a>

## Woodturning Links

American Association of Woodturners  
[www.woodturner.org](http://www.woodturner.org)  
 Woodturning Association

Craft Supply  
[www.woodturnerscatalog.com](http://www.woodturnerscatalog.com)  
 800-551-8876  
 Woodturning Supplies

Packard  
[www.packardwoodworks.com](http://www.packardwoodworks.com)  
 800-683-8876  
 Woodturning Supplies

Klingspor  
[www.woodworkingshop.com](http://www.woodworkingshop.com)  
 800-228-0000  
 Abrasives and woodturning supplies

Highland Woodworking  
[www.highlandhardware.com](http://www.highlandhardware.com)  
 800-241-6748  
 Woodworking tools, supplies

Peachtree Woodworking Supply Inc.  
[www.ptreeusa.com](http://www.ptreeusa.com)  
 888-512-9069  
 Turning and carving tools, supplies

Penn State  
[www.pennstateind.com](http://www.pennstateind.com)  
 800-377-7297  
 Woodturning tools, supplies

Hut Products  
[www.hutproducts.com](http://www.hutproducts.com)  
 800-547-5461  
 Woodturning tools, supplies

Atlanta Wood Products  
[www.hardwoodweb.com](http://www.hardwoodweb.com)  
 800-964-7804  
 Specialty Hardwoods

Woodcraft of Atlanta  
[www.woodcraft.com](http://www.woodcraft.com)  
 770-587-3372  
 Woodworking and Hardware

Rockler  
[www.rockler29.com](http://www.rockler29.com)  
 800-279-4441  
 Woodworking and Hardware

Wood magazine Forum  
[www.woodmagazine.com](http://www.woodmagazine.com)  
 Q & A on Woodturning

## Closing

This newsletter is published monthly by the Georgia Association of Woodturners, (GAW). All opinions expressed by contributors do not necessarily reflect those of the Editor, Officers, or the GAW.

Woodturning Schools and Instructors listed in this Newsletter are not recommended or endorsed by the GAW, but are made available to the GAW members and others as a convenience only.

Your GAW questions, comments and suggestions are always welcome. You may contact any officer through the contact information in this newsletter, or our website's contact webpage:

[www.gawoodturner.org/contact.shtml](http://www.gawoodturner.org/contact.shtml)